

尤努斯中国中心陆口格莱珉乡村银行, 徐州, 江苏, 中国

Grameen Bank of the Yunus Centre, Xuzhou, Jiangsu, China, 2014

主持建筑师: 朱竟翔, 韩国日, 夏珩

Principal Architect: ZHU Jingxiang, HAN Guori, XIA Heng

DOI:10.16414/j.wa.2015.05.086

2014年11月, 香港中文大学建筑学院的团队受邀为尤努斯中国中心建造了陆口格莱珉乡村银行。

项目位于徐州新沂窑湾镇王楼乡陆口村尹庄中央, 房屋是一个两层高、白顶绿身的双坡体量, 坐落在用地北侧。它占地面积95m², 建筑面积240m², 提供办公、营业、培训、会议和员工住宿功能。建筑平面呈矩形, 服务核心筒组织了回字形的流线, 并将内部空间分隔成东西大小不等的两部分。核心筒由家具、集成卫浴构成。

房屋悬浮于地面上, 6个面设有保温层, 并使用了挂板与其后的空气间层形成“集热墙”(Trombe Wall)。它背后的空气被阳光加热后向上流动, 可在冬季白天通过三角形檐部构造进入房间, 提供二层室内空间的供暖。用户通过控制房间南北两侧翻板的开闭, 可达到在冬夏两季调节室内舒适性的目的。房屋地面部分采用了轻质泡沫混凝土板, 以达到蓄热、减震、隔声多重效果。

新建房屋的设计、生产与建造时间只有8周。建筑主体的构件组装和现场建造仅用时4周。团队采用了近距离分布式生产以减少物流时间。徐州与江苏省内加工制造业为主要力量, 承担了95%的工作。除安装集成卫浴和威鲁克斯(Velux)斜屋面天窗等专业性较高的工作外, 建造该房屋的工人全部系本村村民。先进建造的体验使村民对乡村银行有了更高的认同感。□

In November 2014, the CUHK School of Architecture team was invited to design the Grameen Bank at Lukou for the Yunus Centre in China.

The project is located in the middle of Yin Zhuang, Lukou Village, in the Wanglou Township of Xinyiyaowan County of Xuzhou. The 2-storey building with double-pitch white roof and green body sits on the north side of the lot and covers an area of 95m², its gross floor area being 240m². Its functions include office, business, training, conference, and staff housing. The rectangular plan has an ambulatory service core, and the interior space is divided into 2 parts – east and west – with varying sizes. The service core consists of furniture and integrated bathroom.

Suspended above ground, the building has 6 sides installed with thermal insulation layers and adopts cladding technique to form a Trombe wall with the air insulation layer behind. The sun-heated air flows upwards, which during daytime in winter can enter the house through the triangular cornice to heat up the space of the 2nd floor. Users may adjust interior comfort during winter and summer by switching the shutters on the south and north sides of the house. Lightweight foam concrete

panels are applied to part of the flooring for the purpose of thermal storage, shock absorption, and sound insulation.

From design to production and construction, the project took only 8 weeks. Component assembling for the main body and in-situ construction only took 4 weeks. The team adopts close-range distributed production to economize logistics. The manufacturing industry of Xuzhou and the rest of Jiangsu Province played a major role by taking up 95% of the work. Apart from such professional work as installations of integrated-bathroom and Velux pitch-roof louvers, the builders were all local villagers. Through experience of advanced building technology, they have acquired a deeper sense of approval towards the Grameen Bank. □

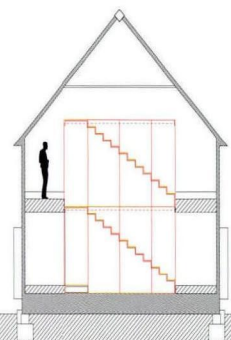
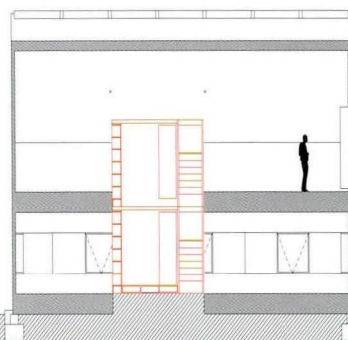
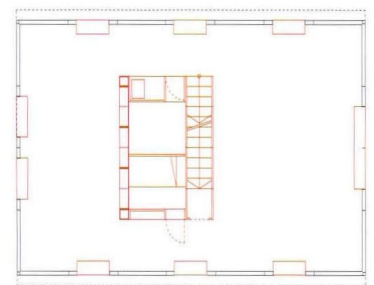
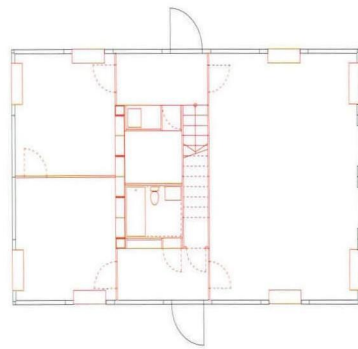
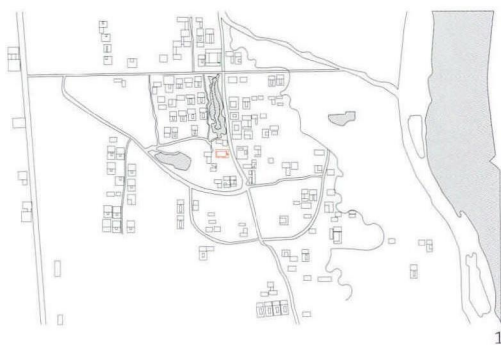
项目信息/Credits and Data

建筑面积/Floor Area: 240m²

建造管理/Construction Managers: 夏珩, 韩国日, 赵妍/
XIA Heng, HAN Guori, ZHAO Yan

行政支持/Administration Staff: 彭嫻, 张东光, 高战,
白国庆, 顾绍辉/PENG Qiang, ZHANG Dongguang, GAO Zhan, BAI Guoqing, GU Shaohui

房屋施工/Construction: 新沂尹庄20位村民/20 villagers
from Yizhuang Village, Xinyi City



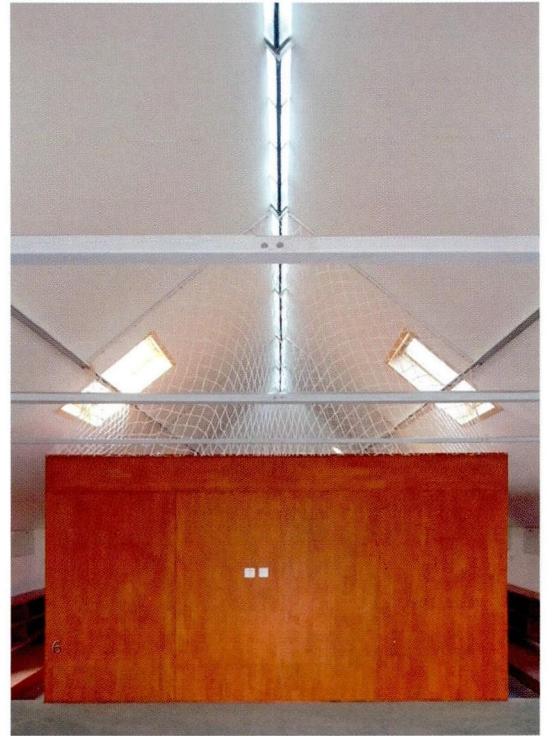
- 1 总平面/Site plan
- 2 首层平面/Floor 0 plan
- 3 二层平面/Floor 1 plan
- 4 剖面/Sections
- 5 外景/Exterior view
- 6 内景/Interior view
- 7 二层坡顶空间中的服务核心筒/Core tube



5



6



7